

# REGIONAL CONFERENCE

VISION + MISSION + CONNECTION

# 2025





# *Welcome to Regional Conference 2025!*

We are so excited to have you here with us!

Below you will find a table of contents for this digital program for the day!

Feel free to download this digital program to use through out the day!

pg. 1-2 - Program guide for Today

pg. 3 - Voting Information Guide

pg. 4 - How to Vote Guide

pg. 5- Wifi for each location

pg. 6 -Pastoral Relations Report, Vision Notes, & Event Streaming Link

pg. 7 - MEMORIAL 1 ADJUSTMENT OF MISSION DESIGNATION

pg. 8 - MEMORIAL 2 RESTORATION OF NEW CHURCH PLANT ADJUSTMENT TO USE

pg. 9-11 - MEMORIAL 3 CREATION OF SACRAMENTAL CERTIFICATION

pg. 12 - MEMORIAL 4 PROMOTING EGALITARIAN PRACTICE IN THE WESLEYAN CHURCH

pg. 13 - Sermon Resources

pg. 14-22 - Ordinands with Photos & Biographies

# ***Program Guide for Regional Conference and Ordination***

Worship

Scripture Reading

Prayer

Worship

Vision Time

Voting Process

Roll Call

Teller Approval

Pastoral Relations Report

Nominations

Kingswood Video

Lunch

Global Partners Video & Talk

Regional Board of Administration Members at Large Vote

Regional Board of Administration Secretary Vote

General Conference Delegates Vote

Nominating Team Vote

Memorial 1 ADJUSTMENT OF MISSION DESIGNATION  
Amendments, Discussion, & Vote

Memorial 2 RESTORATION OF NEW CHURCH PLANT ADJUSTMENT TO USF  
Amendments, Discussion, & Vote

Memorial 3 CREATION OF SACRAMENTAL CERTIFICATION  
Amendments, Discussion, & Vote

Memorial 4 PROMOTING EGALITARIAN PRACTICE IN THE WESLEYAN CHURCH  
Amendments, Discussion, & Vote



Voting Complete  
Appreciation  
Honoring Time  
Indiana Wesleyan University Speech  
Wesleyan Pension Fund Speech  
Upcoming Events  
Voting Results  
Closing Worship

Ordination Ceremony Begins  
Prayer  
Worship  
Presentation of Candidates  
Acceptance of Candidates  
Scripture Reading  
Ordination Message  
Act of Ordination  
Prayer  
Worship  
Benediction and Dismissal

# Voting information Guide

(Please note this will not include any nomination made from the floor)

## Roll Call Ballot

### Tellers

Frontline	Heritage	Red Cedar
Alanna Klomp	Denise	Traci Newville
Brandi Hafler	Rostenback	Lois Sampson
Elizabeth Prys	Georgette Wheeler	
Staci Davey		
Aaron Jones		

## Pastoral Relations Report

### Regional Board of Administration Members at Large

Vote for 5

Andi Kraker (MI) (Lay Member)  
David Lutz (MI) (Lay Member)  
Jim McNeil (IL) (Lay Member)  
Austin Roden (MI) (Lay Member)  
Rev. Aeysha Young ((MI) (Ordained)

### Regional Board of Administration Secretary

Vote for 1

Rev. Chris Bickett (WI) (Ordained)

## Nominating Committee

(Vote for no more than 2 Ordained and  
no more than 3 Lay Members)

Gracie Howard (IL) (Lay Member)  
Emily Koskinen (WI) (Lay Member)  
Xiamary Moreno (MI) (Lay Member)  
Rev. Jason Sanders (WI) (Ordained)  
Rev. Elijah Shamenda (MI) (Ordained)

Memorial 1  
Memorial 2  
Memorial 3  
Memorial 4

## DELEGATES FOR THE 2026 WESLEYAN GENERAL CONFERENCE

Ordained Vote for 20

Rev. Rodrigo Azoifeifa (IL)  
Rev. Chris Bickett (WI)  
Rev. Kathy (RC) Chambliss (MI)  
Rev. Chris Conrad (\*\*Exofficio delegate as  
Regional Superintendent)  
Rev. Tamar Eisenmann (MI)  
Rev. Lexa Ennis (IL)  
Rev. John Freed (GLR staff)  
Rev. Doug Kirkpatrick (IL)  
Rev. Adam Lipscomb (MI)  
Rev. Jack Lynn (GLR staff)  
Rev. Chad McCallum (WI)  
Rev. Craig Rees (MI)  
Rev. Brooks Sayer (MI)  
Rev. Bryan Savage (IL)  
Rev. Tom Schmidt (MI)  
Rev. Wesley Rowan (MI)  
Rev. Brad Prunty (IL)  
Rev. Milt Van Natta (WI)  
Rev. Elise Zuber (GLR staff)  
Rev. Wes Duff (WI)

## DELEGATES FOR THE 2026 WESLEYAN GENERAL CONFERENCE

Lay Members Vote for 20

Jason Adams (MI) (CWC)  
Matt Albrecht (WI) (Hayward LBA)  
Sarah Asaro (MI) (Woodland)  
Kirk Bajdek (MI) (Encounter)  
Reenie Bickel (WI) (North Ridge)  
Shari Brown (GLR staff)  
Mark Derry (IL) (One-Line)  
Arianna Eckart (MI) (Daybreak)  
Caryl Foley (WI) (Storyhill)  
Karen Gormong (WI) (SWC)  
Emily Koskinen (WI) (Storyhill)  
Andy Miedema (GLR staff)  
Xiamary Moreno (GLR staff)  
Betsey Northland (IL) (Heritage)  
Timi Olutade (IL) (Heritage)  
Miriam Pacheco (MI) (La Roca)  
Kurt Parker (MI) (Woodland)  
Kevin Pinner (MI) (Frontline)  
Kris Rozelle (MI) (Zero Collective)  
Paul Vreugdenhil (WI) (North Ridge)



# HOW TO VOTE

Whova

## STEP 1: DOWNLOAD THE WHOVA APP & LOGIN

*To login, make sure to use the same email and password you created when you registered.*



Download on the  
App Store

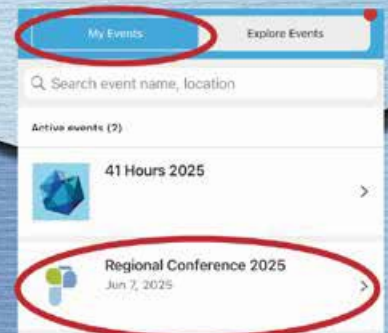


GET IT ON  
Google Play

# HOW TO VOTE

## STEP 2: SELECT 'REGIONAL CONFERENCE 2025'

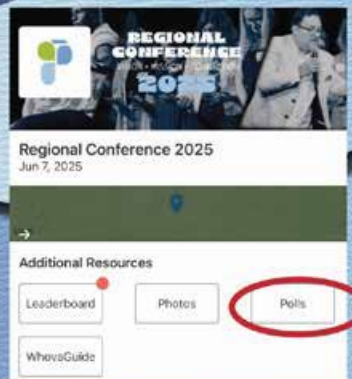
*If you do not see 'Regional Conference 2025' make sure that you have selected the "My Events" tab.*



# HOW TO VOTE

## STEP 3: TAP ON POLLS

*After tapping on 'Polls' wait for the ballot to come through!*





# ***Wifi Information by Location***

## **Frontline Community Church**

*Wifi network: **THE GLR WIRELESS***

## **Red Cedar Church**

*Wifi network: **Guest***

## **Heritage West Campus**

*Wifi network: **PUBLIC***

# **Pastoral Relations Report**

Please access this years Pastoral Relations Report at the link below.

If you have any questions about this document please email [bash@theglr.org](mailto:bash@theglr.org)

[https://drive.google.com/file/d/1dUkS\\_8THcGyVa6irzaE52ll9PLgxxgFl/view?usp=sharing](https://drive.google.com/file/d/1dUkS_8THcGyVa6irzaE52ll9PLgxxgFl/view?usp=sharing)

## **Vision Notes**

Please access the slides for this years vision meeting at the link below.

[https://drive.google.com/file/d/1DHhWJYz5zRz43\\_BU8TY\\_qb66By0erIVL/view?usp=sharing](https://drive.google.com/file/d/1DHhWJYz5zRz43_BU8TY_qb66By0erIVL/view?usp=sharing)

## **Event Streaming Link**

Below is the link to stream todays meeting and ordination!

<https://www.youtube.com/watch?v=51TsYSEi4Xo>



## MEMORIAL 1

### ADJUSTMENT OF MISSION DESIGNATION

Whereas, individual churches throughout history have taken on a variety of shapes and sizes and the Lord has used them to advance His Kingdom,

Whereas, intentionally smaller expressions of church have been an effective model of ministry globally,

Whereas, The Wesleyan Church within the United States has seen an increase in intentionally smaller church plants in the past decade,

Whereas, Intentionally smaller church expressions are demonstrating evangelistic and mission effectiveness;

Whereas, Many smaller expressions of the church intend to multiply into other intentionally small churches rather than building toward a traditional larger church model,

Whereas, the Articles of Religion state “A local church is a body of believers formally organized on gospel principles, meeting regularly for the purposes of evangelism, nurture, fellowship, and worship” (240);

Whereas, The Discipline does not currently make space for intentionally small churches to be called churches as the Developing Church is “eventually intended to become an established church” (510), a component of establishment is 25 in membership (518:1), which precludes many smaller models.

Whereas, the Mission designation does not use the word church (537);

Whereas, a group of people can meet the standards of the Articles of Religion to be a church, but still not be considered a church by our Discipline, resulting in a disconnect between our polity and our ecclesiology,

Whereas, the Mission designation was only used once in the last six years by a district reporting a new work,

*Resolved*, that the designation Mission (537) be updated as follows:

#### 5. Mission

**537.** A special evangelistic, rescue, **pioneering church work**, or missionary work which cannot appropriately be organized as a developing church ~~shall~~ **may** be carried on as a mission. A mission may be conducted by an established church subject to the approval of the district board of administration (655:14), by a district (1180:22; 1233:26) or by the Church Multiplication and Discipleship Division. It shall not maintain a membership roll nor receive members. A mission shall have no local boards, officers, or committees except such as are appointed by the mission director **or pastor**, are amenable to the mission director **or pastor**, and can be replaced at the discretion of the mission director **or pastor**.

## MEMORIAL 2

### RESTORATION OF NEW CHURCH PLANT ADJUSTMENT TO USF

Whereas, The Wesleyan Church has long understood the need to intentionally support existing churches as well as plant new churches;

Whereas, New church works often take many years to become financially sustainable;

Whereas, Changes to the 2022 Discipline removed the section New Church Plant Adjustment that allowed for an intentional phase in of USF obligations for new churches to allow for incremental phase in of USF obligations over a period of five years;

Whereas, as we recruit potential church planters expecting USF payment from day one is an unnecessary hardship,

Whereas, The change has added financial burden to our church planters;

*Resolved*, That the following paragraph be added back into Disciple 2005:4 as paragraph (c), with the following adjustments:

(c) New Church Plant Adjustment. Whenever a district plants a new church, the USF obligation for that church ~~shall~~ **may** be phased in over the first five years of its operation in the following manner: For the first year of operation—**beginning with the reception of congregational tithes and offerings at the onset of public worship gatherings**—there will be no obligation; for the second year the assessment will be set at 25 percent of the regular assessment; for the third year at 50 percent; for the fourth year at 75 percent; and for the fifth year at 100 percent.



## MEMORIAL 3

### CREATION OF SACRAMENTAL CERTIFICATION

Whereas The Wesleyan Church believes proper administration of sacrament is a core component of a church (240, 242),

Whereas the need for understanding and intent on the part of the individual overseeing a sacrament is important to ensure proper alignment with scripture and proper engagement by those participating with the means of grace being offered,

Whereas communion is considered by Wesleyans as a means of grace that is an important and essential component of a healthy church both individually and corporately and communion is encouraged to be taken at least once a month and required to be taken at least once every three months in our churches (293, 5600),

Whereas smaller expressions of the church may be led by equipped and commissioned Lay Missionaries and may not have an ordained or licensed minister as a part of their fellowship,

Whereas this creates a situation depriving smaller expressions of church from a sanctioned means to partake of the means of grace within The Wesleyan Church polity,

Whereas scripture is clear on the need for order in the worship and sacrament, however it is silent on the credentials of the one overseeing that order.

Resolved, that there be a creation of a Sacramental Certification with the addition of paragraph 2338:5 as follows:

(5) Create and oversee a sacramental certification process. Those with a Lay Minister, Lay Missionary or Supply Pastor credentialing may undertake a brief course on sacramental theology and practice. Upon satisfactory completion they will be granted a Sacramental Certification certifying them to oversee baptism and communion within The Wesleyan Church. Course material and certification will be overseen by the Ministerial Study Course Agency, and may be administered by any Ordained Minister. Sacramental Certification runs concurrent with credentialing as a Lay Minister, Lay Missionary, or Supply Pastor and expires if that credentialing is relinquished.

Resolved that 725:6 be adjusted as follows:

(6) Administer, if an Ordained (313:1), Commissioned (3059:2a), or Licensed Minister (3044:1), the sacraments of baptism and the Lord's Supper. Each pastor is encouraged

to provide for the observance of the Lord's Supper at least once each month, but is required to do so at least once every three months (293). A supply pastor shall secure the services of an ordained (313:1), commissioned (3059:2), or licensed minister (3044:1) who is a pastor, for such observance (3260:2), except when authorization has been granted by a district superintendent as provided in 3260:2, **or have completed the sacramental certification (2338:5).**

Resolved that 3260:2 be adjusted as follows:

(2) A supply pastor shall be appointed temporarily to fill the pulpit and to provide a spiritual ministry. They do not have **inherent authority** to administer the sacraments or to perform marriages unless that authority adheres on some other basis. **A supply pastor may complete the course on sacramental theology and practice and obtain a sacramental certification authorizing them to oversee sacrament as provided for in 2338:5. A supply pastor** shall not perform the administrative function of the pastor except in filing of reports unless authorized to do so by the district superintendent (1310:8, 25). If a supply pastor is serving a congregation isolated from Wesleyan ministers, making it difficult to provide for administration of the sacraments (725:6), the district superintendent may grant the supply pastor special authorization to administer them.

Resolved, that 3440 be adjusted as follows:

**3440. Regulations for a Lay Minister.**

(1) A lay minister has no authority to solemnize marriages or to administer the sacraments, except as provided for in 3260:2, **or if they have obtained sacramental certification as provided for in 2338:5**, nor any vote in the local board of administration nor in the district conference unless elected thereto.

Resolved, that 3490 be adjusted as follows:

**3490.** A lay member who has been appointed to service under the Global Partners Division, or under the Church Multiplication and Discipleship Division, shall be commissioned by the district conference (1180:27f) as a lay missionary. The commissioning shall include a solemn act of consecration as set forth in 5855 (1405; 3091), and the issuance of a commission signed by the General Superintendent, the district superintendent, and the district secretary (6400; 1310:23; 1332:4; 1935). The commission shall be continuous with the period of service. The missionary shall be a



nonvoting member of the district conference (1090:6). The missionary shall be amenable in keeping with the provisions of 2272, **and may oversee sacraments upon completion of sacramental certification in keeping with 2338:5.**

## MEMORIAL 4

### PROMOTING EGALITARIAN PRACTICE IN THE WESLEYAN CHURCH

Whereas, The Wesleyan Church is an egalitarian denomination, fully acknowledging that women and men are equal in responsibility and authority to serve the Church, with a rich history of ordaining women – including the first woman to be ordained in North America by Wesleyan pastor Luther Lee; and

Whereas, The Wesleyan Church has a position paper, approved by the General Board, related to the subject of women in ministry, but no definitive statement in the *Discipline of The Wesleyan Church* that states the denomination's position on women in ministry, and

Whereas, the lack of a statement in the *Discipline* has the unintended consequence of giving leverage to Wesleyan congregations who wish to prevent women from serving in ministry, claiming the denomination does not have an official position, and

Whereas, a definitive statement in the *Discipline* which includes both women and men for all areas of pastoral service and ministry work provides the foundation for an increase in egalitarian theology among Wesleyan churches,

**Resolved** that paragraph 675 in the *Discipline* be updated to read as follows:

*Discipline 675:*

A pastor *is a woman or man who* is an ordained, commissioned, or licensed minister, who is called by God and appointed by the Church to serve as the spiritual shepherd, teacher, and administrative overseer of the local church; preaching the Word, directing the worship, administering the sacraments and ordinances of the Church; taking the comforts of the gospel to the sin-burdened, the sick, and the distressed; discipling converts, nurturing and instructing believers, equipping and enabling them for their part in ministry; and serving as chief executive officer in the government of the local church (3007).

And, **Resolved** that a new paragraph be added to the *Discipline* as paragraph 3007, using the exact wording in the most recent position paper as approved by the General Board of The Wesleyan Church on Women in Ministry Leadership:

*Discipline (New Paragraph) 3007 (referenced in paragraph 675):*

*3007: The Wesleyan Church affirms that woman is fully equal to man in terms of her responsibility, as directed by the Holy Spirit and authorized by the Church, to preach, teach, lead, govern or serve in any office or ministry of the Church.*



# ***Sermon Resources***

***Please enjoy these free resources that we encourage you to use for your sermons!***

The link below will take you to the written sermon. After Regional Conference there will also be a bumper video available for you to use along side the sermon!

This sermon series is broken down by week and topic along with key elements to focus on!

[https://drive.google.com/file/d/1RnzGPePCO5uBwCnZ2-lsK\\_0GZiYgM-L/view?usp=sharing](https://drive.google.com/file/d/1RnzGPePCO5uBwCnZ2-lsK_0GZiYgM-L/view?usp=sharing)



## **Emily Ash**

Emily has always grown up in and around ministry because of her family's influence as pastors and mentors to others. Getting her call into ministry at a young age was not something she anticipated but is something she has claimed and fallen in love with through her time as a student at IWU and her opportunities to serve at different churches. She is fully accepting and living into her call as a pastor of the next generations and hopes to continue to find her own path in ministry as God leads her every step in loving others and expanding the Kingdom of God.



## **Anna Beck**

Anna currently serves as the Groups Pastor at Central Holland and is a key member of the Spiritual Formation and Teaching teams. Anna has dedicated herself to full-time ministry in various roles since she graduated from Indiana Wesleyan University in 2012. She further pursued her education and obtained a degree from Wesley Seminary in 2020. Anna is grateful for her supportive husband, Matt, and cherishes their three children, Cora, Oliver, and Gabrielle (Bella).



## **Nick Brock**

Nick is from Greenfield Indiana and pursued ministry at Indiana Wesleyan. He graduated undergrad in 2022 with a double major in Youth and Pastoral Ministries and finished his M-Div through the Kern Program in 2024. He is currently the High School Pastor at Life Stream Church in Allendale.





## ***Riley Crainer***

Riley has worked at Berkley Hills Church since college and currently serves as their Discipleship Pastor. She has been married to her husband Rodney for 9 years this summer, and they have three young children together.



## ***Erin Cruise***

Since a young age, Erin has had a passion for teaching kids about Christ. Erin spent the last five years in education and experience to get to the point of ordination. Erin grew up in Eastern Iowa where she will return to pursue her call to Children's ministry.



## ***Ashley Egresi***

Ashley answered a call to ministry in early 2019, completed her MDiv through Wesley Seminary May of 2023, and has been serving as a volunteer staff member and discipleship pastor at Lighthouse Community Church since 2019. She is passionate about both individual and congregational discipleship and spiritual formation and loves helping people grow deeper in their relationship with God as they seek out his calling on their lives. Her past times include home improvement projects, reading, baking, cooking, being outdoors, and spending time with those close to her, including her husband and four children.





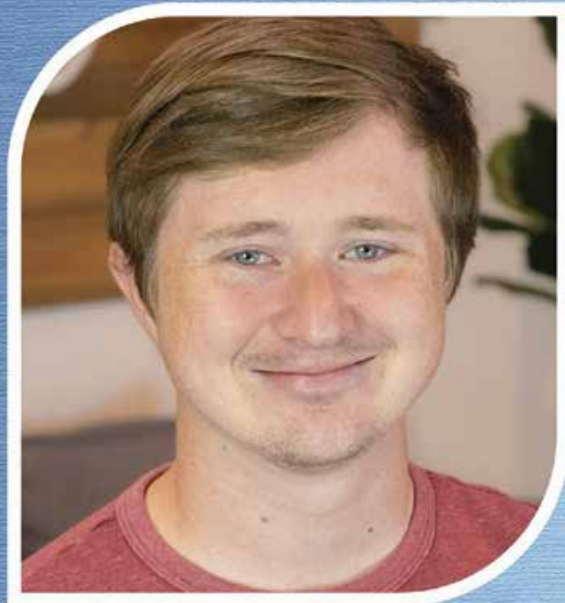
## ***Rick George***

Rick has been married to Jenny for just over 23 years. They have 4 Children Abby (19), Ricky (18), Grace (15), & Joey (13). He grew up in the Kalamazoo Area and has been serving in the GLR for the last 15 years.



## ***Jarod Harder***

Jarod Harder was born and raised in Bartlesville, Oklahoma before moving to Indiana for college and then moving to Michigan to work at Frontline. He first felt a calling towards ministry in 2018 and, after the encouragement of friends and mentors, set off wholeheartedly towards that calling which he is still pursuing now.



## ***Ashlyn Jones***

Ashlyn Jones, a native of rural NE Pennsylvania, felt a call to ministry at a young age, originally aspiring to go overseas to be a missionary. After graduating from Kingswood University in 2022, she answered God's call to serve at Kentwood Community Church, where she has been faithfully involved since June 2022. Her passion for ministry and missions continues to grow as she serves with a heart dedicated to God's work.





## **Courtney Kimball**

Courtney, a Michigan native, grew up in the Wesleyan Church and never imagined becoming a pastor—until God had other plans. She is passionate about helping people find true community within the church and deeper relationship with Jesus. Through her journey, she has fallen in love with the local church and the ways God is moving through it.



## **Joel Kotrch**

Joel considers himself a huge family man, his two favorite people are his wife, Andrea and their son, Oliver. Joel's passion is to help people follow, love and live like Jesus each and everyday of their lives and lives to demonstrate this in his home. He enjoys being outside, playing games with his family and cheering on his favorite teams, the Detroit Lions and the Michigan Wolverines. His life verse is Jeremiah 17:7-8.



## **Carter Lezman**

Carter and his wife, Betsy, have been married for five years and recently welcomed their first child, Elim Jude, in December. Carter serves as the Worship Pastor at All Shores Wesleyan Church, where he brings his passion for Jesus, songwriting, and discipleship to life. Outside of ministry, Carter loves the outdoors—you'll often find him fly-fishing, camping, barbecuing, exploring new places, or simply sitting with Jesus in nature.





## **Chad Loucks**

Chad is married to his wonderful wife, Rachel, of 15 years. Together they have three children. Chad is a graduate of Bethel University (BA in Christian Ministries) and Fuller Theological Seminary (MDiv). Chad serves as the Next-Generation and Children's Pastor at Red Cedar Church, Rice Lake, WI.



## **Mike Morgan**

Mike has been giving leadership to executive initiatives at The Wesleyan Church HQ with Global Partners since 2015. He also joyfully serves part-time as the Worship Pastor at Inspire Church in Fremont, MI. Mike and Joni have been married since 2005, and they have two sons (Miles and Otis).



## **Jordyn Osburn**

Jordyn is a wife and mom living in Allegan, MI. Together with her husband and a wonderful team, she has the privilege of leading Refuge Ministries, a church that they planted together in 2017. They also run a residential program on their working farm serving men in crisis as they seek life restoration.





## **Daniel Przybylski**

Daniel recently started a new role (Jan 2025). He is the Supervisor of Spiritual Care (Main Prison Chaplain) with Bellamy Creek Correctional Facility. Prior to that he served as a Staff Chaplain with UMH-West for 5 years (Feb 2020-Jan 2025). He is married to his high school sweetheart Heidi, and have been married for close to 10 years and together they have 3 wonderful daughters (Ivy-6yrs, Iris-3yrs, & Lilly-3 months).



## **Charlene Spaulding**

Charlene is a retired Hospice Chaplain and currently serves as Chaplain providing spiritual care of victims and their families along with the forensic staff at the Newaygo Co. Prevention of Child Abuse and Neglect and is the Ministry Director for an organization which provides six school districts with health and hygiene products. Charlene volunteers, preaches, and serves as a Celebrate Recovery leader and sponsor at the Muskegon Rescue Mission Women's Shelter.. She serves at Inspire Church, Fremont, MI, in their grief support ministry, and in their Celebrate Recovery programs for teens and elementary alongside the adult programming. Charlene is so very grateful to celebrate ordination and her calling to serve the marginalized, lost...and those on the fringes of society - Jesus most precious children; "the least of these of mine".



## **Eli Stein**

Eli has a heart for students, worship, and deliverance ministry. He currently serves under the Student Ministries pastor at Kentwood Community Church, Kentwood, MI. When he's not at work or writing papers, Eli loves music, watching movies, playing games, getting to know people over coffee, and heckling his friends.





## **Daniel Whetlor**

Daniel Whetlor grew up his whole life in Maryland in an amazing ministry family. He serves now in Saline, MI at Keystone Church as the Student Ministry Pastor. He is married to his wonderful wife Alexa, and loves his cat Tate very much.



## **Chris Carroll**

Chris was raised in an alcoholic abusive home with no spiritual foundation. He was powerfully saved out of the drug and alcohol culture of Southern California when he was 20 years old through the ministry of a vibrant and life-giving Wesleyan Church in Encinitas, CA. Chris has been blessed with a beautiful wife, Madelaine (22 years) and together they have 5 sons: Josiah (18), Charles (16), Cody (14), Jedidiah (12), Jeremiah (10). Chris currently serves as the Lead Pastor of Life Stream Church in Allendale, MI.



## **Robert Adam Davidson**

As a lifelong Free Methodist, Adam did not mean to work at a Wesleyan Church, it just sort of happened...as ministry often goes. He is grateful to be on the journey and excited about how God continues to lead he and his wife, Brittany's, life, as well as their four pastor's kids, who just can't wait to hear how Dad uses them in another sermon illustration.





## ***John Fleming***

John is married to Amy, is a veteran, and has adopted their two children. But, in the end, all that matters is that he loves Jesus and wants to see others fall in love with Jesus too. John serves at Darrow Road Wesleyan Church, Superior, WI.



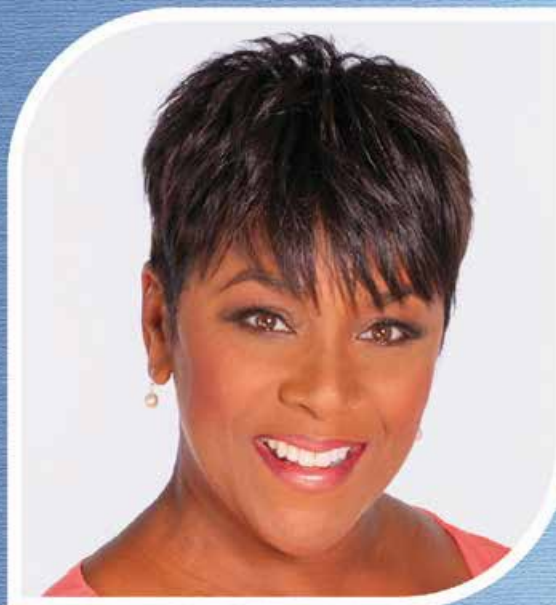
## ***Nathan Struble***

Nathan has been married to his wife, Andrea, for almost 18 years. Together they have twin sons who are almost 16, Cameron and Jordan. Nathan enjoys reading, being with people, and traveling with his family. He has been a pastor for the last 14+ years, and God has energized him by now being a part of The Wesleyan Church.



## ***Debbye Turner Bell***

Rev. Dr. Debby Turner Bell accepted Jesus in her heart as Lord and Savior at 7 years old. She grew up seeing a powerful move of God at work in her life and countless others around her. Dr. Turner Bell answered God's call to ministry in 2001. She was ordained an Elder in the A.M.E. Church in 2009. She serves as the Connect and Grow Pastor at Kentwood Community Church, Kentwood, MI. Dr. Turner Bell is also a Marketplace Minister, a leadership development consultant, a wife to Gerald Bell, and mother to Lynlee Bell.





## **Michelle “Shelley” Eckenwiler**

Shelley Eckenwiler serves as the Children's Pastor at Crossroads Community Church in Rockford, MI.



## **Barry West**

Barry is the current Pastor at Hancock Wesleyan Church in Hancock, WI. Barry has been in that role since April of 2020 – Barry lives in Plainfield, WI is also employed at Waushara County as the IT Director – Barry loves his family and enjoys spending time with them as well as spending time with his church family.

