



# WELCOME TO WOODLAND

# CHURCH PROFILE 2021

WOODLANDCHURCH.COM | 269.962.6644  
14425 HELMER RD S, BATTLE CREEK, MI

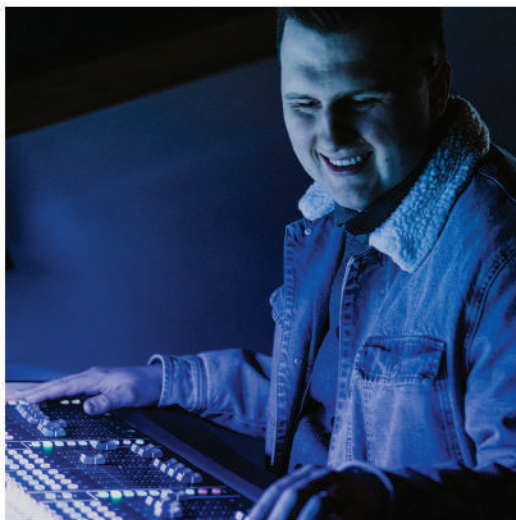


# FROM SEED TO SEQUOIA

“Seed to Sequoia” is a phrase that defines Woodland Church. Grandiose trees of strength and dignity serve as a visual of the promise of a future hoped for by new believers and a model of growth that encompasses multiple generations.



Our building's stately appearance reflects the desire deeply held for our members and our community: we grow. Through diligent financial stewardship and eager obedience, our property has consistently maintained a strong presence in our city and expands to serve the needs of our people.



We creatively influence the reach of our community through online platforms, social media outlets, and multi campus teachings. We believe that as progressive as are the stages between seed and sequoia, so too are the stories and experiences of the believers who call Woodland home. To nurture the connection between a member's story and the truths of scripture is what Woodland Church exists for.

*“No more thistles, but giant sequoias, no more thornbushes, but stately pines, Monuments to me, to God, living and lasting evidence of God.”*

*Isaiah 55:13 MSG*

# CORE VALUES

We believe we can best achieve our mission of following Christ by keeping these values.



**Past Honored  
Future Embraced**



**Lead with Love  
Live with Light**



**Live to Give  
Grow to Go**



**Whole-Hearted Faith  
Light-Hearted Fun**

# WEEKEND SERVICE OVERVIEW



**Battle Creek Campus**  
**Sundays | 11:00AM**

*14425 Helmer Road S  
Battle Creek, MI 49015*

**Marshall Campus**  
**Sundays | 9:00AM & 11:00AM**

*15510 A Drive N  
Marshall, MI 49068*

# ADDITIONAL PLATFORMS



**LIVESTREAM**  
**Battle Creek Campus**  
**Sundays | 11:00AM**

<https://woodlandchurch.online.church/>



**YouTube:**  
The Woodland Channel



**Facebook:**  
Woodland Church





## A SPIRIT LED CHURCH

**At Woodland Church we respect the dynamic nature of the Holy Spirit. Though we adhere to a blend of modern song selection and visual display, we are careful not to ignore His promptings and encourage sensitivity to His presence throughout each service. Our greatest hope is that we would facilitate a moment, through spoken word or song, in which the Holy Spirit could freely move. And it is with this posture that we lead and practice worship.**

*“The primary purpose of the worship gatherings is to put the work of God on display and give Him glory.”*





# MEET THE STAFF



## **Jack Lynn | Interim Senior Pastor**

Jack Lynn is from the Great Lakes Region of the Wesleyan Church. His hometown is Holland, Michigan. He is here to lead the staff and congregation of Woodland Church through the transition; providing leadership and guiding the Search Team and Elders through the process of finding the new Lead Pastor.



## **Devon Shephard | Marshall Campus Pastor**

Devon has been on staff for a little over a year. He is married to Bre, and together they have one son. Devon serves as the Marshall Campus Pastor, working alongside Breana and Kaidin. This role includes pastoral care, volunteer recruitment, leadership development, sermon preparation and delivery, as well as community involvement.



## **Kate Geissel | Finance Director**

Kate has been on staff at Woodland for 3 years in the Business Department. She has three children and is married to Zhenya. Kate oversees the finances, business, and human resources of the church. Her strength is assisting with all things behind-the-scenes and is a great problem solver for the team.



## **Thayne Asaro | Operations Pastor**

Thayne has been on staff for almost 4 years and oversees the execution of the weekend service environment. Thayne also serves as a member of the teaching team here at Woodland, providing pulpit relief when needed. His role has a focus on service and event planning, project management, volunteer recruitment and training, and pastoral care.



## **Derek Malone | Local & Global Missions Pastor**

Derek has served the church for over 25 years in Family Ministry. In 2021 he began a new journey of local & global missions. He spends his days talking to partners and exploring ways to mobilize Woodland outside the four walls.



# MEET THE STAFF



## **Kayla Long | Family Pastor**

Kayla has been a part of the Woodland staff for 2 years. In this role, she partners with parents and leaders across grades 5th-12th, who facilitate spaces for students to pursue and develop their faith. She has a passion for creative writing and communication and explores this capacity within Woodland Church and the surrounding community.



## **Ashley Hicks | Early Childhood Director**

Ashley has worked at Woodland Church for 15 months and is married to David Hicks. As the Director of Early Childhood, Ashley oversees the Infant-Preschool Sunday classrooms as well as the curriculum, volunteers, and events that go with those age groups. This includes casting vision, volunteer training, and forming a team of equipped leaders who have the goal of introducing the youngest in the congregation to a personal relationship with God.



## **Brittany Gray | Elementary Director**

Brittany has worked at Woodland Church since July of 2020. She and her husband, Jake, have three children. Brittany is the Elementary Director for Woodland Kids, overseeing Kindergarten through Fourth Grade. She plans interactive Sunday services aimed at helping children build a relationship with God. Brittany strives to cultivate spiritual growth with the volunteers, knowing that their relationship with Jesus is crucial to authentic worship in kids service.



## **Bre Shephard | Marshall Family Ministry**

Bre has been on staff at Woodland for almost 2 years. She is married to Devon and has one son. Bre holds a mixture of roles at the Woodland Marshall campus including communications and marketing, as well as overseeing Kids and Student Ministries. Bre also plays a role in helping new guests get connected at both Woodland Marshall and Woodland Battle Creek campuses.



## **Sarah Asaro | Communications Director**

Sarah has been on staff at Woodland for almost 3 years, alongside her husband Thayne. Sarah oversees all aspects of branding, communication, digital marketing, and print. From creating media for sermon series, to designing signage for our facility, Sarah has a passion for seeing the message of Jesus communicated with excellence in all that we do through art and design.



# MEET THE STAFF



## **David Hicks | Spiritual Formation Director**

David Hicks joined the team at Woodland Church at the beginning of 2021. David is married to Ashley and they are expecting a baby boy in February. When David joined the team his main responsibility focused on creative video production and weekend service planning. David is transitioning into a new role where he will be focusing on leading groups and developing volunteers.



## **Kaidin Martinson | Marshall Campus Worship**

Kaidin is one of the new hires at Woodland Church. Kaidin's role at Woodland Church is to serve as the Worship Leader at the Marshall Campus. His mission is to grow the worship culture, disciple and recruit volunteers, update the song bank, and serve wherever a need is seen.



## **Morgan Komdeur | Production & Technology**

Morgan has been on staff for a year and was a production contractor with Woodland for 2 years prior. His role includes installing, maintaining, and improving all IT and production equipment for our campuses. He also prepares the production elements for our Battle Creek Campus Sunday services.



## **Connie Moon | Office Coordinator**

Connie has been with Woodland Church for over 9 years. Connie serves as a receptionist for Woodland, answering the phone, greeting people in the office setting, and being support for other ministry leaders at Woodland by helping them out with various projects. She is married to a wonderful man, Bob, and they have one grandchild who keeps them running constantly.



## **Cindy Andrews | Interim Executive Assistant**

Cindy assists Interim Lead Pastor Jack Lynn perform administrative tasks. She began working for Woodland in August during the pastoral transition. She and her husband, Eric, have two daughters Emily and Lizzie that they are very proud of. Her role also includes scheduling and assisting the Woodland lead team through administrative work.



# WOODLAND KIDS



**Woodland Kids exists to partner with families in building a foundation for children to form a relationship with Jesus Christ. Woodland Kids is the Children's Ministry of Woodland Church and works with children from birth-4th Grade. We champion the impact parents have on the lives of their children, so it is our mission to support families as they lead their children to know God.**

**During our weekend services, we offer a safe, energetic and loving environment for children to learn biblical truths. Our Early Childhood classrooms are a safe place to foster creativity and exploration in a nurturing environment. Our volunteers overflow the joy of Jesus to the youngest in our congregation through singing, laughing, and playing. Our Elementary room strives to communicate to every child that Jesus loves them and there is nothing separating them from the love of God. Our goal is to have Elementary students develop a dependence on God while knowing that He is their first line of defense no matter what. Woodland Kids desires to be a glimpse of what heaven looks like through joy, laughter, and intentionality for babies, toddlers, preschoolers, and Elementary aged children.**





# **WOODLAND GRADES STUDENTS 05-12**



**Our Woodland Student ministry spans from 5th-12th grades and is a continuation of the environment of explorative faith in our Woodland Kids ministries. Our leaders across the board are trained and challenged with facilitating a safe space for students to vocalize what they think and feel, change their minds, be challenged and stretched, and ultimately discover who they were uniquely created in Christ to be.**

**We take to heart the wisdom of Proverbs 20:5 in drawing out the special gifts and talents that God has tucked into the hearts of our students through asking, affirming and encouraging their pursuit of the Holy Spirit.**



**Our 5th-8th graders meet during the 11:00AM service on Sunday mornings and our 9th-12th graders gather from 6:00PM to 7:30PM on Sunday nights.**







Our Woodland Marshall campus is one year old. In that time, we've seen God do amazing things in our midst, including life transformation and numerical growth. We started the campus with 25 attendees and have quickly grown to averaging 150 attendees between our 9:00AM and 11:00AM services. The Marshall campus has experienced an incredible influx of not only young families, but young adults as well.



Our connections team is a group of 40 servant hearted individuals who love to welcome people into the community. Our worship experience is Spirit-filled, and a culture that falls in line with that of our Battle Creek campus. The children's ministry within this campus is quickly growing both with attendees and volunteers. Our children's volunteers teach God's word and encourage our children in times of worship. There is a tangible excitement to be involved within this community as we've seen outstanding small group participation the past 4 semesters.

## LIFE CHANGE

Baptisms, salvations, and life transformation stories are celebrated, and experienced every week! Within this past year we've celebrated **26** baptisms, **30+** salvations and countless stories of God's life changing work.







# WHAT'S NEXT?



## NEW TO WOODLAND

If you walk through the doors of Woodland Church for the first time and fill out a Connect Card you will have just launched into a 1 year journey. We have a team that oversees a 7 step “stay-connected” process that ensures that each person who walks through our doors will not fall through the cracks.



## BAPTISM

Woodland Church has a strong belief that if you have decided to follow Jesus, water baptism is a great next step in your faith journey! We believe that baptism is a public declaration of one’s decision to follow Jesus. It is an outward declaration of the work that the Lord has done in us!



## MEET THE PASTORS

Every quarter we invite the church to a “Meet the Pastors” event. This is a time to connect with those who are newer to Woodland in a casual yet intentional setting. The pastors share vision, answer questions, and give a holistic view of who we are as a church.



## MEMBERSHIP

This is a class for those interested in becoming an official member of Woodland Church. This includes learning the Wesleyan Articles of Religion, as well as the mission and values of Woodland Church. Attendees are given an opportunity to enter into a membership covenant with Woodland Church.



# OUR HISTORY



For over a hundred years Woodland Church has ministered to the Battle Creek Community. Our church was founded in 1899 with Rev. George Kulp as the first pastor. A year later we affiliated with the Apostolic Holiness Union in 1922 with the Pilgrim Holiness Church, which later became part of the Wesleyan Church. In 1968, we became known as First Wesleyan Church. The name was changed to Woodland Church in 2019. There have been 3 physical locations for the church, as we have expanded and grown. We moved into our current location in the early 1980's. The church has benefited from visionary pastoral leadership over the years, with Bible-based teaching, which is culturally relevant and applicable to our daily lives.

The body at Woodland has always been outreach oriented, fulfilling Christ's command to go into all the world and make disciples by equipping the body for acts of service. One of our mottos in the 1980's was "Bring them in, Sit them Down, Build them up, Send them out."

Woodland has done this in a variety of ways over the years and has never shied away from trying new things. With our ever-changing world, we have used radio ministry, bus ministry, sports ministry, Christmas baskets, Living Christmas Tree, drama productions, preschool, food pantries and the like to reach the lost, and meet needs in our community. We have also partnered with other Bible-based ministries to minister to the underprivileged in our community.



Our congregation has benefited from strong Children's and Student ministries. Woodland has always strived to assist families to train up their children in becoming Christ followers through exciting and engaging formats, which encourage their spiritual growth.

At Woodland we strive to reach our community through a variety of outreach opportunities and events. We create environments where everyone is welcome, no one is expected to be perfect, and people are encouraged to grow in their relationship with Jesus. We find families are being restored and hope is renewed as we love each other well.





# WOODLAND VISION PICTURE

3-5 YEARS FROM NOW

## OVERALL STATEMENT

Woodland Church is a body that is focused on pleasing God. It is a ministry to the Southwest Michigan area that is having an impact in the forceful advancement of Christ's Kingdom. We are hearing stories and seeing lives that are being transformed by Jesus Christ working through the ministries of Woodland Church. These stories are being expressed through our culture, outreach, worship, kids and students, discipleship and leadership development.

## CULTURE OF THE CHURCH

- Christ is the head of the Church. When it comes to the mission of the Church, following His mandate and call is the highest priority.
- We are committed to equipping people with Biblical literacy.
- We are committed to reaching lost people for Christ.
- We have a leadership development pipeline that pours into existing and new leaders on staff, the board, the congregation, and throughout all of our ministries.
- We are a church that represents the Southwest Michigan area demographically (This represents ethnicity, socio-economic levels, age, etc.)
- Woodland Church is a safe place for non-believers and believers to explore faith, ask questions, and chase after God.
- The Holy Spirit is actively released in unprecedented ways and we regularly see the miraculous happen.
- We are committed to intergenerational experiences throughout every ministry of the church.
- We have a hunger for God and are chasing after revival in ourselves, our church, in our region through our campuses and with other churches.
- There is demonstrated trust and relationship within the congregation, board, and staff, as well as in the local towns and the region. We have created a system that facilitates and ensures healthy working relationships between the Lead Pastor, the board and the staff.



# WOODLAND VISION PICTURE

3-5 YEARS FROM NOW

## CULTURE OF THE CHURCH CONTINUED...

- The Gospel of Jesus Christ is being spread by the people of Woodland Church wherever they go. The church building is a hub for people being equipped to go out to their workplaces, homes, and communities with confidence to make new disciples.
- We prioritize obedience to the Holy Spirit, embracing risk, guided by accountability, without fear of negative consequences.
- We have an engaging & effective online presence on multiple platforms, that expands our reach. This online presence has as much of an impact in a number of regions as we hope for through in-person experiences and discipleship.
- We are a church that consistently evaluates everything on the front end and are willing to make strategic changes in response to that evaluation, even hard changes, to be in alignment with the mission.
- We are a church of innovation, with both in-person and online communities. We will not only define ourselves by the spread of our geographic locations, but also by the reach of our online presence.
- We are committed to making disciples who are continuously being formed into the image of Christ.
- We strive to live out the Gospel in our communities throughout the week.
- We are spiritual contributors and not spiritual consumers. The church does not exist to serve us first. We are the Church, and we exist for the world.
- We operate under an effective Guiding Principles document.
- Our church attenders engage in wise financial stewardship in their personal lives and give generously to fully fund the mission and vision of the church.
- We regularly encourage and empower people to share stories of transformed lives.





# WOODLAND VISION PICTURE

## OUTREACH AND ENGAGEMENT

- We are committed to grow our local outreach impact.
- We will continue to explore additional campuses as the Lord opens up opportunities in addition to our already existing Marshall campus.
- We will develop a meaningful strategy for regional and global missions.
- Our facilities are utilized by the local community to impact and reach Calhoun County.
- People want to be part of what God is doing through Woodland Church and our campuses.
- Woodland Church is known for the impact it is having in the region and is promoting collaboration with many other ministry organizations.
- We are doing everything possible to serve and engage our neighbors with the love God has for them.
- We identify, equip, and mobilize “marketplace ministers” into the communities and region we impact. This means that the people in the congregation see themselves as ministers in their sphere of influence in their homes, neighborhoods, schools, and workplaces.
- Recovery Ministries see weekly life transformation through the power of Jesus Christ.
- We identify felt needs in the community and respond appropriately, cooperating with other organizations in alignment with our mission.





# WOODLAND VISION PICTURE

## WORSHIP

- **Worship services are engaging and Holy Spirit filled. The presence of God is life changing and palpable.**
- **We are a church that unapologetically preaches Jesus Christ.**
- **We frequently celebrate baptisms, stories of life transformation, and regularly see people make commitments to follow Jesus Christ.**
- **We create worship experiences that welcome all and eliminate distractions.**
- **There are times when the power of the Holy Spirit is so “real” that we set aside the sermon to stay in presence of God.**
- **The primary purpose of the worship gatherings is to put the work of God on display and give Him glory. In doing so we facilitate a space where non-believers can be drawn into His presence and discipleship can begin to take root in believers.**
- **The creative use of worship arts is regularly expressed in our worship gatherings resulting in meaningful worship for multiple generations.**
- **We use well-executed production, technology, and online ministry to assist us in effectively worshipping God regardless of location.**





# WOODLAND VISION PICTURE

## KIDS MINISTRY

- Our Kids' ministry is effective at engaging with children, so much so that parents have to come because their kids can't stay away.
- We have created an environment that is safe and secure and gives parents confidence when they drop their kids off.
- Parents are equipped to disciple their own children and to lead them to Christ.
- Adult volunteers are passionately serving because they sense God's call to make an eternal difference in kids' lives and they are personally growing in their own walk with Christ.
- There are teachers, leaders, and apprentices in every area of ministry. New leaders are always being developed.
- Kids are accepting Christ regularly.
- Kids are telling their friends about Jesus and about Woodland Church.
- Kids worship services are engaging and Holy Spirit filled. The presence of God is life changing and palpable.
- Kids are intentionally being taught how to read the Bible, understand it, and apply it to their lives.
- Kids are seeing prayer modeled by the Kids' ministry leaders and are learning to pray confidently themselves.
- We are committed to developing a discipleship ministry for the most committed kids that takes them to the next level.
- We are committed to seeing all of the Kids' rooms in use for ministry and seeing the total property fully stewarded to grow kids in their faith.
- The infrastructure of Kids' ministry is attractive and working well.
- Kids' ministry events are calendared for an entire year at a time with reasonable flexibility and are effectively communicated to the entire congregation.





# WOODLAND VISION PICTURE

## STUDENT MINISTRY

- **Students are grounded, have ownership of their faith, and feel confident to share it with their friends.**
- **We regularly see students accepting Christ.**
- **Students are proud to invite their friends to attend Woodland Church in Battle Creek and at the Marshall Campus as well as in other communities where we will launch future campuses.**
- **Parents are equipped to disciple their own students and to partner with the student ministry leaders in order to send students into their next season of life well.**
- **Biblical literacy is widespread for our teenagers. Middle school students know how to feed themselves spiritually. They know Jesus and how to interact with Him personally.**
- **Our student ministry is highly focused on being a place where everyone is welcomed. We are intentional in working together as a community to create and establish a safe space for all.**
- **Student ministry is a place where students feel safe to ask questions, confront non-biblical worldviews, and are equipped to Biblically respond to those views when on their own.**
- **Student worship services are engaging and Holy Spirit filled. The presence of God is life changing and palpable.**
- **Students are actively involved in serving in the local church.**
- **The infrastructure of student ministry is attractive and working well.**
- **Student ministry events are calendared for an entire year at a time with reasonable flexibility and are effectively communicated to the entire congregation.**
- **Young Adult ministry is thriving and draws many students from Student Ministry as well as from our local young adult subculture. This demographic, 18-28 year olds, are engaging their friends and impacting the local social culture. A full team of leaders and volunteers pours into them and builds relationships, while they grow in spiritual and human maturity.**





# WOODLAND VISION PICTURE

## DISCIPLESHIP

- People are being equipped and are living with a “sent” mindset and see themselves as ministers in their sphere of influence.
- We have many people growing in maturity in their faith, deepening passion, mentoring and discipling others to multiply themselves. We are disciples who are making disciples who are making disciples.
- People are learning what their gifts are and are serving in areas that match those gifts. They are being equipped in and living in their gifting in the church and in their everyday life, 24/7.
- There is a strong community within the Body of Christ at Woodland Church and this is shown through groups and relationships resulting in 75% of the adults being in small groups that are functioning effectively and being led by called, trained, and equipped leaders.
- Small group participants are going deep in their faith and raising up disciples.
- We are faithfully equipping the saints to do the work of the ministry. No ministry area is lacking passionate volunteers. We are continually looking to develop new volunteer ministry opportunities that are aligned with the giftings of the people in our body.





## WOODLAND VISION PICTURE

### CARE MINISTRY

- **The people of the church know they are loved, valued, and are cared for in practical expressions of meeting their needs and fully supporting them.**
- **We have a team of experienced volunteers and leaders who are ready to help with practical needs like small home repairs, moving, winterizing, and spiritual encouragement.**
- **We have a well-led and fully-developed benevolence ministry that includes financial counseling and a clear evangelism strategy with follow-up and connection to discipleship.**
- **We have a dynamic hospitality team that creates an environment where everyone feels welcomed regardless of their background. People who walk in with reservations or barriers quickly drop them and are able to fully experience the presence of God.**
- **Woodland Church feels welcoming to everyone who comes into each campus.**
- **We have an active prayer ministry that ministers to the people and moves the hand of God.**
- **People are freed from spiritual bondage weekly through inner healing ministry.**
- **We are effectively caring for those who are elderly or unable to attend our worship gatherings.**





# WOODLAND VISION PICTURE

## LEADERSHIP DEVELOPMENT

- **The Lead Pastor models leader development and has a passion for the Woodland Church Leadership Pipeline that all staff and elder board are engaged in. This is a pipeline that will build leaders for the future both in and outside of Woodland Church.**
- **We are committed to monthly and quarterly intentional leadership training, equipping, and development with staff, the board, and identified leaders and future leaders in every area of ministry.**
- **We are committed to grow as leaders and to invest in the growth of leaders around us.**
- **We are committed to identifying potential leaders and giving them space to learn, try things, take risks, and help them identify the “sweet spot” God has for them either inside the church, outside the church, or both.**
- **Woodland Church’s ministry influence is always expanding locally, regionally, and globally as more leaders increase our Kingdom capacity.**
- **Woodland Church invites other churches into our leadership development strategy to assist them in increasing their ministry capacity. This is especially true in the Great Lakes Region churches.**
- **Strong leaders are drawn to Woodland Church to participate in residency and intern opportunities.**

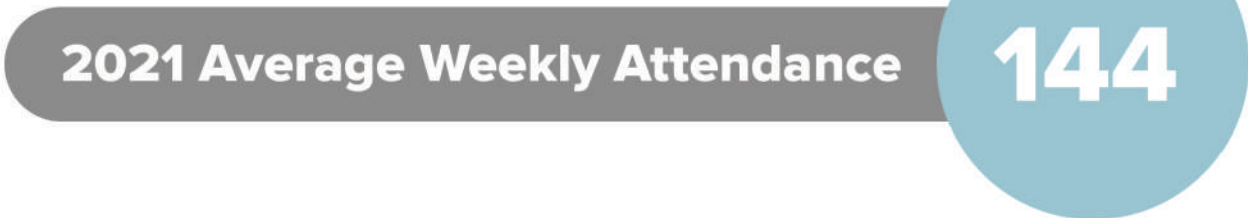




# **ATTENDANCE**



# **FAMILY MINISTRIES**



# **ANNUAL BUDGETS**

2020/2021 **\$1,990,647.31**

2021/2022 **\$2,023,818.99**





**Woodland Church is located in Battle Creek, Michigan the breakfast capital of the world. It is located in southern Michigan along the I-94 corridor and is 2 hours from either Detroit or Chicago. Battle Creek is nestled in a valley at the convergence of the Kalamazoo and Battle Creek Rivers. Besides the cereal industry, there is a rich history of manufacturing in Battle Creek. Kellogg's world headquarters is currently in Battle Creek and Post Cereal is manufactured here. Our industrial park has numerous auto manufacturing companies, so our community has a large blue collar base. We are also the birth place of the 7th Day Adventist Church and were a health Mecca in the early 1900's.**

**Battle Creek has a small town feel with a population of 50,000 and you can get from one side of the town to the other in about 20 minutes. Beautiful Goguaac Lake is within the city limits and we have numerous parks including the North Country Trail that meanders through the city, the Ott Preserve, Kimball Pines and Bridge Park, which are just east of the city limits in Emmett Township. We also have an impressive zoo for a city our size!**

**Battle Creek was once home to a large military training base during World War 1 and 2 which had 16,000 acres. The area now includes the Training Center, an Air Guard Base, Fort Custer Industrial Park, Fort Custer Recreational Area, a Veteran's Hospital and National Cemetery.**

**Battle Creek hosts numerous festivals the two largest being the Cereal Fest and the Field of Flight which fills our skies with hot air balloons for the week of July 4th. Our city offers all the amenities needed for great family living with great schools, including Kellogg Community College and Western Michigan College of Aviation.**

