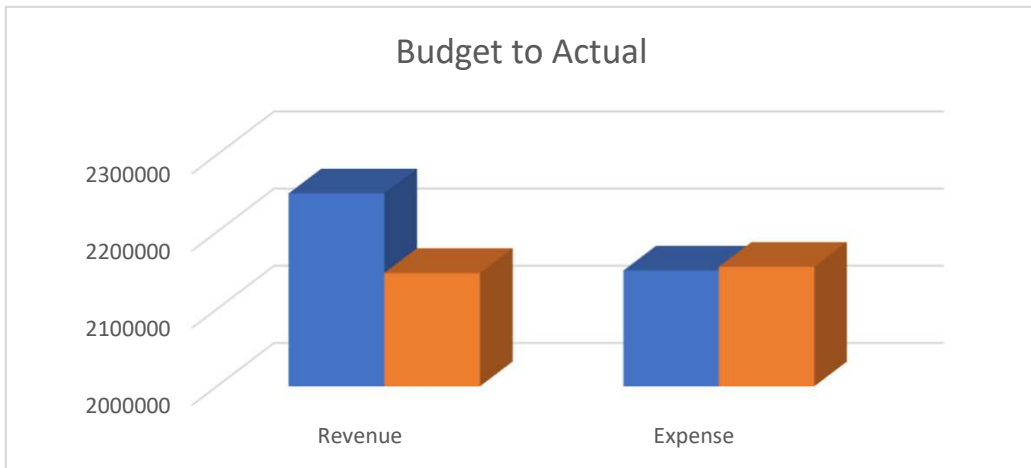


## Cash Availability

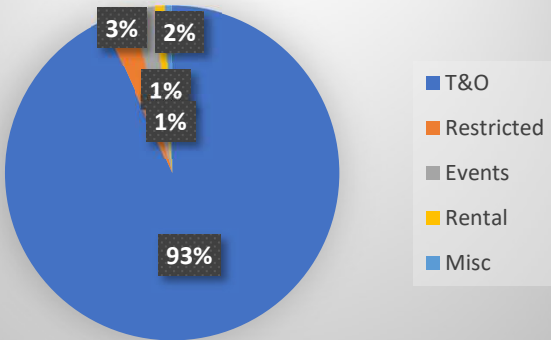
Cash	\$ 43,257
Liabilities	(6,935)
Restricted	(14,876)
Available	<u>\$ 21,446</u>

## Statistical Data

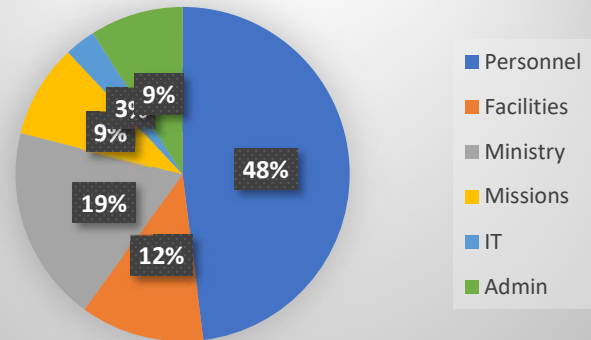
- 21 Decisions
- 32% Life Group participation
- 712 Counseling hours
- 6450 Community volunteer hours



### Revenue Categories



### Expense Categories



### Attendance

